



Plan Participation

HELP PLAN Sandusky County

Place dots in order of priority: 1st choice 2nd choice

- | | | |
|---|--|-------------------------|
| Neighborhood Revitalization/Removal of Property Blight | Preservation of Farmland / Natural Resources | Residential Development |
| Infrastructure Improvements (roads, sewers, water supply) | Quality of Life (parks, recreation, entertainment) | |



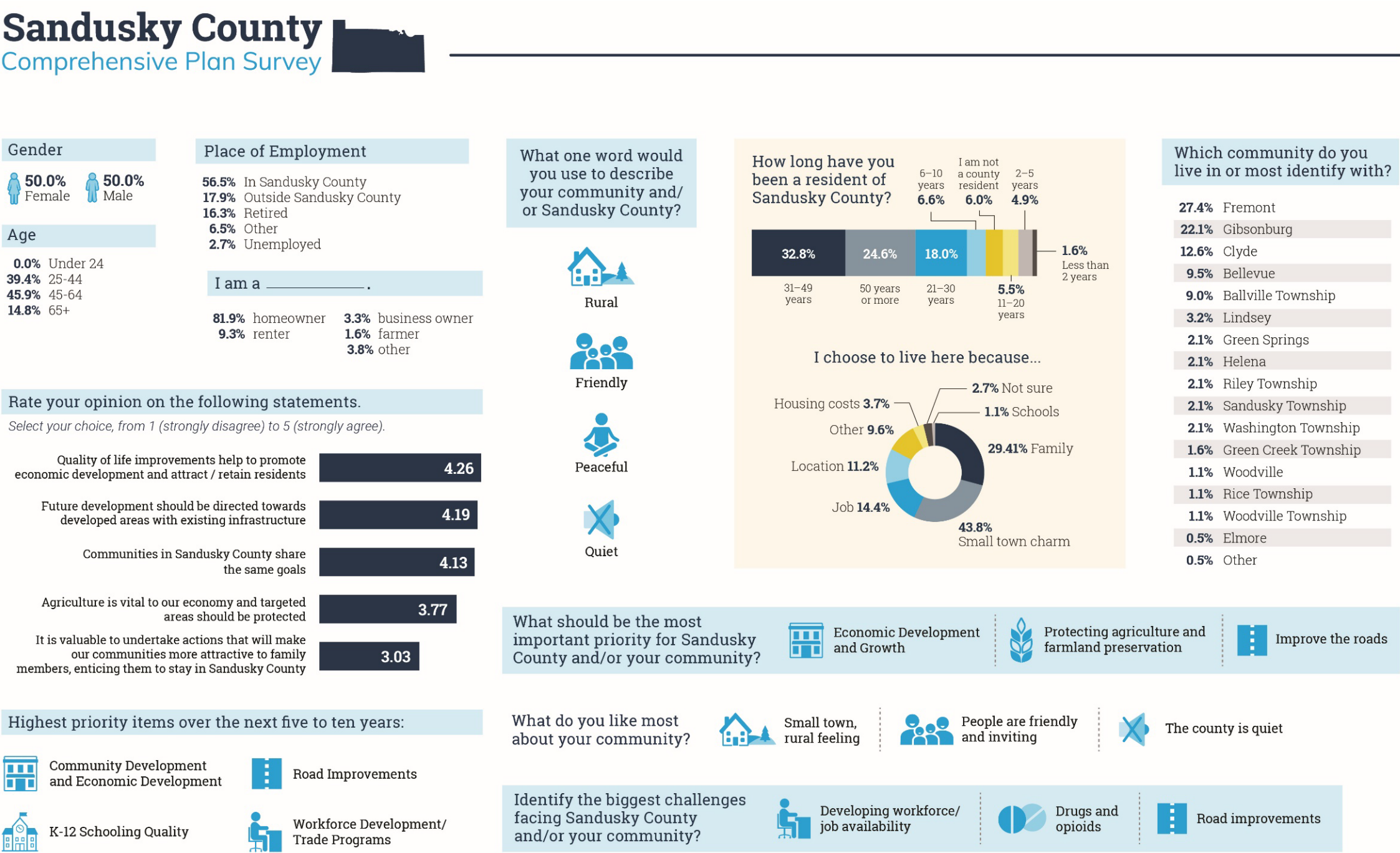
Plan Participation

1) Steering Committee

The 2020 Sandusky County Plan was developed under the guidance of 22 community officials. The Steering Committee’s task is to guide the planning process through input from the community and recommend solutions to the issues presented.

2) Community Survey

The community survey was created in May 2019 and is meant to gather resident input through a variety of related questions. The responses the residents give provide us with the first opportunity to understand the community through the eyes of those who live there. The priorities of the residents will often overlap with those of the community officials, but when they do not, we are alerted as to what may be a point of disagreement between the priorities of the officials and the priorities of the residents. This can be of great use during the planning process and deciding what is best for the community going forward. The following infographic provides a detailed outline of the results.

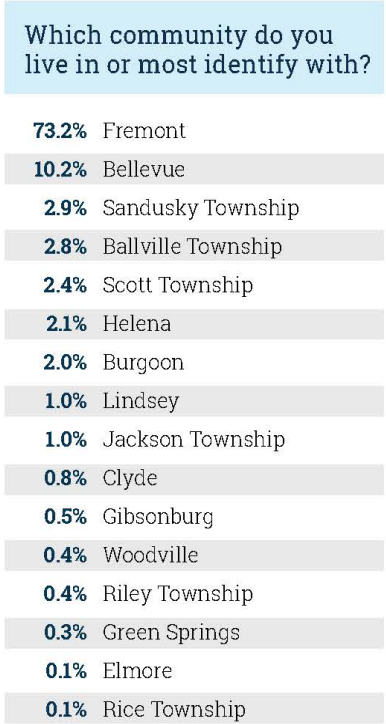
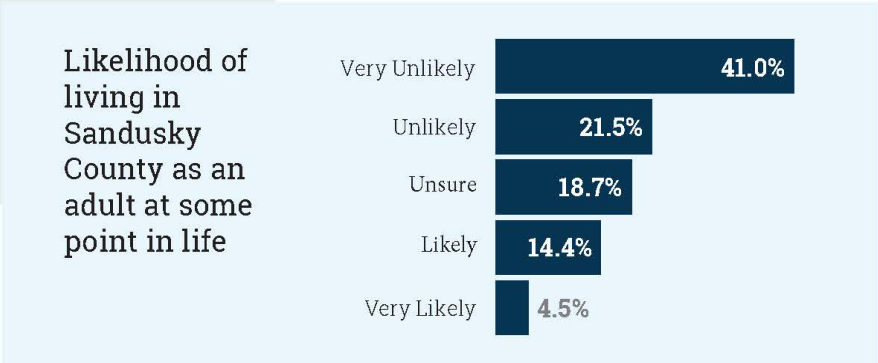
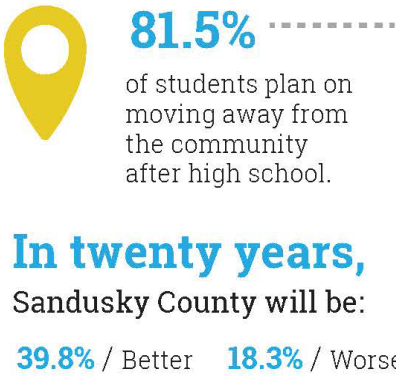
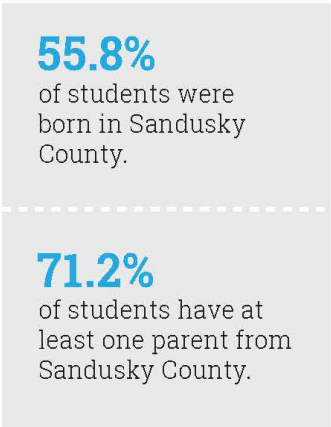
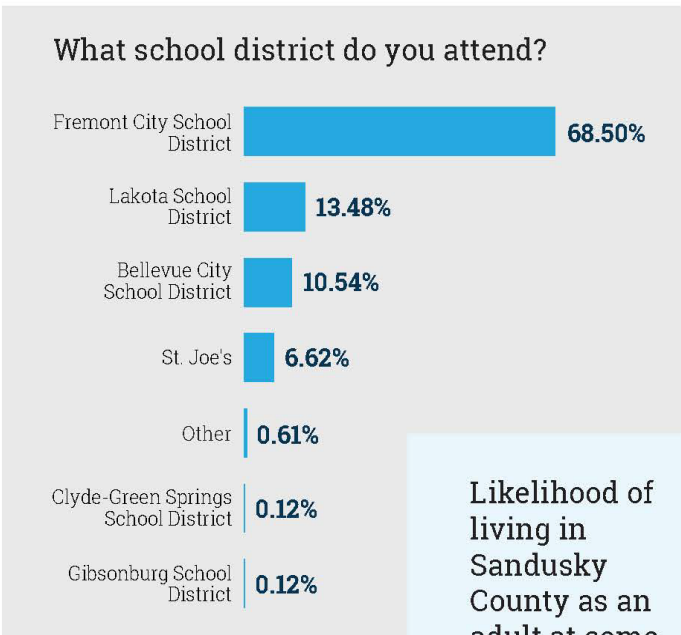
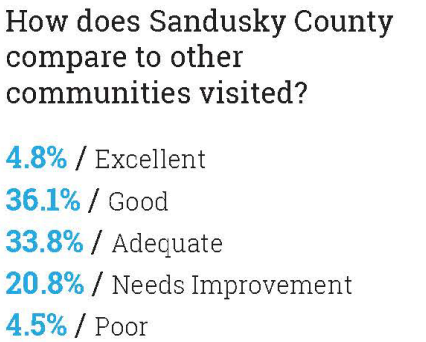
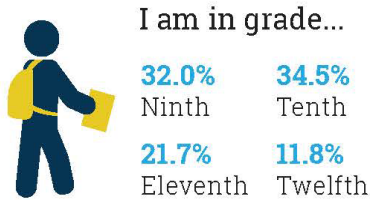


3) Student Survey

The student survey was designed and released to high school students throughout the county in November 2019. The goal of the student survey is similar to the community survey in that we can identify the priorities of the students and what they hope the county will look like in the future. The priorities of the students appear to be new retail opportunities and restaurants, improved schools and school programs, additional youth/ teen programs, drug intervention programs, and road improvements. The following infographic provides a detailed outline of the results.

Sandusky County Comprehensive Plan Survey

Student Survey Results



4) Community Outreach Efforts

The authors of this plan have made numerous efforts to engage the public and gather ideas and concerns from residents who may not otherwise be part of the planning process. This started with a presence at the Sandusky County Fair, where information, surveys, and other materials were displayed in the County Commissioners’ tent. Commission staff or the planning consultants were on site most days, and the Commissioners also assisted.

The SCRPC also maintained a tent at the Clyde Country Fair, and attended two Fremont Farmers’ markets. These events were very successful and they allowed for interaction with many people who would otherwise not be aware of this process. It is the intention of the SCRPC to continue attending some of these events in the future, after this plan is completed.

5) Past Comprehensive Planning Efforts

A review of the 2013 Comprehensive Plan indicated many carryover Plan Goals and Objectives that include:

Infrastructure

- Adequacy of infrastructure in areas targeted for growth/development
- Safe, efficient transportation system, efficiently connecting major traffic generators
- Support and capacity for advancement in new telecommunications technologies

Land Use / Design/Neighborhoods/Resiliency

- Success in preserving prime farmland
- Identification of areas targeted for infill, reuse, and rehabilitation; and barriers to those areas’ development
- Enhancing homeownership
- Demand-responsive housing stock: ranging from affordable entry-level to executive housing
- Enhanced capability for elderly to successfully “age in place”
- Enhanced “curb appeal” within communities and neighborhoods, including property maintenance incentives and enforcement
- Best use of land use planning tools to achieve desired outcomes
- Countywide protocol for safety, resilience, disaster prevention/mitigation

Economic / Downtown / Workforce Development

- Downtown preservation and enticement of highest and best uses of downtown resources
- Activities that capture outside dollars: regional retail, tourism, manufacturing
- Accommodating innovation and small business/entrepreneurship

Quality of Life

- Seamless provision of health care throughout the county
- Seamless delivery of K-12 education; alignment with present/future employer needs
- Coordinated effort to create an attractive, exceptional quality of life for all that includes: Bicycle/walking trails, greenway parks, incorporating natural features (Sandusky River), healthy communities, aligning with institutional planning with Terra Community College, county parks, health care systems, schools, United Way, Great Lakes Community Action Partnership (GLCAP), Chamber, CVB, and Sandusky County Economic Development Corporation (SCEDC).

Intergovernmental Relationships

- Continued and enhanced coordination between entities
- Opportunity for collaboration between communities